

Goulburn Valley Woodworkers Inc
A0003352K



VOLUME 32 – No. 01

January 2018

Newsletter

President - Len Taylor

Secretary - Rob Osborne

Club phone 0481856407

PO Box 2071 Shepparton 3630

96 Packham St, Shepparton

WGV Committee:

Treasurer - Chris Harvey

Vice President - Perrie Bullock

Workshop Manager - Willis Mundy

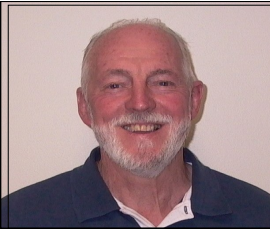
Committee Members

Vern Marven, Athel Chapman, Bob Beecroft,

Geoff Baker, Baden Howe.

Newsletter Editor - Don Mc Crabb

Almoner - Lorraine Noonan



PRESIDENTS PAGE

Welcome to 2018. Yes it's here already, seems to come around quicker each year or is it that we are all getting slower?

As you receive your newsletter we will be into raffle sales with Fairleys IGA and Mooroopna Newsagency sites. I will endeavour to contact rostered members prior to sale dates by phone or text as a reminder. Some of the Invited Demonstrator invitations have been returned mostly accepted.

Thanks to Don Mac and the Benalla woodies they have 2 dates organised to sell raffle tickets for us, one in January and one in February.

Mooroopna and Tatura members have organised their own roster. Thanks to those involved.

A big thank you, to the members who worked on the clean, up prior to Christmas.

Hope you all had a merry and safe Christmas and look forward to the new year.

We will have a better Wood Show and Raffle, wont we!

Len.

GOULBURN VALLEY WOODWORKERS INK 3352K

General Meeting to be held at the clubrooms

96 Packham Street Shepparton

January 15th at 7-30pm

Apologies

Correspondence

Treasurers Report

Committee Business

General Business

Door & Raffle

Marilyn Behcke

Dick Syer

Show & Tell Chairman

Vern Marven

SPC ARDMONA

Factory Sales

“Owned and run by locals for locals”

Discover the big line up of top Australian brands.

Save up to 70% off leading brands

We are excited to announce the introduction of an all
New dedicated frozen and chilled section to the store.

You can now purchase big brand frozen and chilled
products at discount prices

197 - 205 Corio St. SHEPPARTON 3630 VIC

[www. Spcardmonafactorysales.com.au](http://www.Spcardmonafactorysales.com.au)

Open 7 days a week

Monday - Friday 9am - 6pm

Saturday & Sunday 9am - 5pm

CLOSED

Christmas Day, Boxing Day, New Years Day,
Good Friday & Anzac Day.

Bendigo Bank - Term Deposit Review
Noel – Tom Tacey Award
Quality Teams – Inv 65416 – Reprint
The Australian Woodworker – Article on the Club.

OUT:

Bob Beecroft – Woodshow info
Alexandria Community Shed – Update of Secretary Email Details
Carrolls Wood Supplies – New Don McCrabb – Adding Bob/Baden to the roster, New CWS image
David Chew/Ray McDonald - Sign
GV Telco – Support and New Domain Name
Noel – Tom Tacey
Dion McKay – Temporary Membership
MOVED: Chris 2ND: Bob

BUISNESS ARISING

Some confusion over the date of the Xmas Party, it is the 2nd Dec at the croquet club.

Letter from Lindsey Whitfort - Reply sent from the Committee, read out to the meeting by Len.

Lindsey's Reply: Concerned of the numbers on mornings. Members have approached Lindsey and confirmed his view.

Have we had a downturn in membership, 18 letters sent, 1 Paid, waiting on others.

We are not getting the member's in the workshop on mornings. The suggestion on fess was just trying to get people back in the workshop, Linseys last 4 times as a supervisor, only had 1 in 2 days.

We usually have Pensioner in mornings, and can't afford fees. He is more interested in getting numbers back.

Helen - There is some confusion on fees, especially supervisors discretion, need a statement in the newsletter, clearly explained in the newsletter.

Jon - As supervisor, not enough money put in box. \$62 on paper, \$40 in box.

Noel - Used to put in more than the \$2 fee, more use of the machines needs to be reflected in the fee paid. He put in more because he appreciated the workshop, it's a matter of attitude. Be thankful it's only been \$2 for the last 20 years.

Dick - There must be a break-even figure at the end of the day.

Bob - Lets address this at next committee meeting. Bob joined here because of the equipment and expertise. Can't continue to use reserves to float the club. The Club must be financially viable.

Jon - Suggests a survey.

GENERAL BUISNESS

David Chew sign done by Ray.

Bowel Cancer guest speaker available next year.

Supervisors – Please keep resale items locker closed at all times.

Wheel cutter missing. Knock out bar missing. Lathe tools swapped out.

Australian Woodworker article about our club, thanks to Ray for original history.

Upcoming Dates added to minutes.

Raffle Roster to be done soon.

MEETING CLOSED: 9:04pm

RAFFLE

Don McCrabb- Pot Purri Lid

Marilyn Behncke – Bowl Blank

Toby Edwards - Bowl Blank

Vern Marven – Combo Opener

Helen Pickersgill – Powder Contact

Dick Syer – Inlay

Peter Meddings – Red Gum Pen Blanks

Helen Smith – Pen Blanks

Show and Tell

Chris Harvey – Demonstration of Keith Morrison Toy,

Helen Taylors decorations, Picture – Raffle Prizes taken in Mechanics Institute, Bud Vase of Coloured Pencils.

Len – Xmas Decorations of Banksia Cones. Finished in Danish Oil.

Alex – Liquid Amber Platter.

Cherry – Twice turned bowl with Polyurethane finish.

Colin Brock – Platter.

Ray McDonald – Boxes with pins in lids.



Letter

This letter from Bob Beecroft is to address a problem I think is rearing its head around the club, first allow me to spell out my past experiences

I ran a very successful automotive business in Shepparton for a number of years. I'm a past president of Tatura Football club. Past chairman of the Tatura Park fund raising committee. I managed a department for Trevaskis Engineering, and now in my second year on the committee of the G. V. Woodworkers

At our club, I was told by one of our members that over the last year the committee has only done three things. 1, put up the yearly membership, 2, put up workshop fees, and 3 put a charge of 5 % on member's wood show sales. He also said that the committee was simply incompetent. While I understand that we can all get frustrated from time to time I do feel a need to take these comments to task.

First. Member subscriptions have been \$40.00 for many years and clearly this level has not been covering costs. Just the rent and power for our workshop is over \$6,000.00 this does not including insurance or other fixed costs. Annually our membership subscriptions have brought in \$4,060.00 in 2015/16, At \$60.00 per year for a single membership & \$65.00 for a family membership we are one of the lowest in the state. The Benalla Woodies, I'm told, is \$140.00 and they still charge workshop fees. Bendigo have a fee of \$70.00 with a discount of \$10.00 if you pay on time But you also have to pay \$50.00 up front to cover your raffle book which is a compulsory payment. Albury – Wodonga have a fee of \$60.00 Family and \$40.00 a single with a \$3.00 workshop fee, plus \$5.00 per ½ hr. or parte there of, on there bigger equipment i.e. thicknesser. They also have another source of income and that is an out let where the members sell their goods and the club takes a 30% fee on all sales from that outlet. Eldon they pay \$70.00 a year and \$5.00 to enter the workshop, coming into the workshop your expected to pay this even if you only come in for a cup of coffee. As I'm a relative new member to this club can a member tell me how long membership has been \$40.00? I believe it goes back that far that it would have been consider a lot higher than \$60.00 is considered today. If I'm wrong please tell me.

Second. Work shop fees: - The first problem faced by the committee was that not all members where paying the workshop fee .

At the time of our decision to increase the fees, the costs of running the workshop were increasing rapidly. The money coming in did not even begin to cover costs. Now a couple of things about that, if it is only a small job you are doing the fee will be adjusted down accordingly. Again I'm new so I don't know how long the workshop fee has been \$2.00 but I'm told by some that it goes back 30 years, if that is the case it was far more back then, you had to take not the first note but the second note out of your wallet, not some lose change out of your pocket as you do now. If I'm wrong tell me, but whinging to whoever will listen is not helping. The third matter is the 5% on members wood show sales. This is another very small increase and one that should have no effect on you the members. For example if you are selling something for \$50, put \$55 on it, you get an extra \$2.50 and the club gets \$2.50. The club lost around \$1800.00 last year and as I see it one of the main reasons we have Wood Show is for the members to sell their wares. I know it is good for the club, promote our selves, new members and so on. But let's face it we have a number of members that bring in their goods put them on the shelf and leave, why aren't they entitle to pay something to the club?

How long are we expected to subsidise them? You may say they have done a lot of work in the past and so they have done their bit for the club. I don't cop that, we are all part of this club the past, present and into the future. If people are not physical able to help then 5% should be a pleasure to give as help to the club.

Some will say we spent too much on advertising and that may be so, but you never know. I was part of the committee that spent around \$3800.00 on advertising, was it wrong?, I do not know and neither does anyone else. Unless you run 2 events side-by-side one with a lot of ads and the other without any, then you cannot say you know.

There is a forth matter that this member did not complain about and it may not be worth mentioning but it is the price increase of the smoko. Where can you get a Tea or Coffee and two biscuits for \$0.30? It costs more than that at home. \$0.50 is still very cheap.

In regard to the financial matters above I wish to point out that each one of them were agreed to by members at general meetings by an overwhelming majorities.

Now some other things. We are working very hard on turning around our next show, and council may help with advertising for the next show, but you should know we are also now working on the show after that. I have spent a large part of my life on club committees and I believe this one is a hard working committees that I'm proud to be part of. Price increases may seem harsh but I do not wish to be a committee member that see this club bankrupted. Let me also say it always seems to be the same small group doing most of the work and guess wAnother observation we had around \$50,000 invested that is now around \$40,000. Some may say we spent too much on equipment i.e. new thicknesser , I believe spending money on equipment is the right thing to do as we need to maintain or improve our level of equipment. We now have opposition out there competing for members, 10 years ago there was no such thing as a Men's shed. I know I have said it before, but I joined our club after looking at the Tatura Men's Shed, our member's expertise and our level of equipment is important. We also had to use some of our investment for day to day running of the club. If people think we are over charging now, (when you look at the facts we clearly are not) how did the past committees over charge enough to put \$50,000.00 into investment.

Small groups talking in the negative are doing more harm than they know, people saying this is wrong, that it cost too much. Will only put other people off, but if we are all looking at the positive how good this club is, it will encourages others and we can only benefit from it.

In reading this you may think that I'm a little upset well let me tell you I'm more than a little upset and I believe the person that made the comments listed owes me and the committee an apology.

Regards

Bob Beecroft

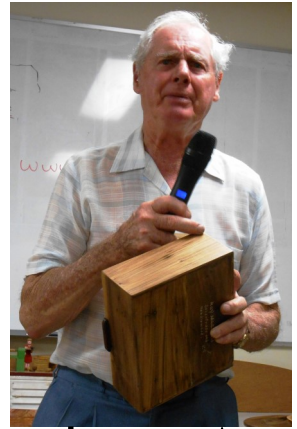
Show and Tell



Chris



Lindsay



Ray



Lindsay



Colin



Len

2017 Christmas Celebrations

On Saturday 2nd December 42 members and partners gathered at the Shepparton Croquet Club for our Christmas break up. The evening commenced with a very tasty roast dinner, provided by Denise from Mums Kitchen, which was followed by some equally tasty sweets.

On each table there was a couple of mind teasers and a quiz which kept everyone thinking until after the meal when the answers were given by Quiz Master, Rob Osborne, however the score of 9 out of twenty, by two tables showed that we all need to polish up on our general knowledge.

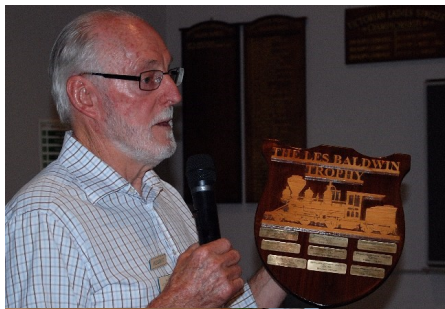
President, Len Taylor, addressed the gathering outlining the activities and achievements of the club over the last twelve months, and announced that Bryan Finlayson had been granted Honorary Membership of the club, Bryan responded by generously returning his subs to the club as a donation.

Peter Tacey was then asked to present this year's Tom Tacey Award and after giving a brief history surrounding the award he presented the award to this years deserved winner, Helen Taylor. The Les Baldwin Encouragement award recipient, Joe Ganino was unfortunately unable to attend on the evening but will receive the award at a later date.

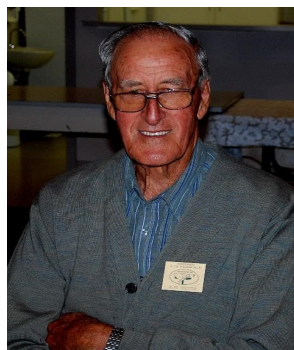
Prior to drawing the raffle, M.C. Vern entertained us with a few amusing ditties, the raffle was then drawn with the winners being; Nina Slade- Christmas cake, Denise Beecroft-Brooch, Chris Syer-Wine, Helen Smith- Boysenberry sauce, Alan Turner-Hamper, Helen Osborne-Chocolates, Helene Meddings- Hamper, Don McCrabb- Strawberry sauce and Isobel Fairmaid- Wine. Big thanks to Norma Harrison for baking the Christmas cake, Jan Taylor for providing the brooch, Peter Tacey for the Boysenberry & Strawberry sauces and Chris & Debbie Harvey for the bottles of wine.

We hope that all woodies and families had a safe and happy Christmas.





Photo's by
LORRAINE NOONAN



SCROLL SAW BLADES

We are Australian Distributors for the Swiss made **Pegas** blades.

These are available in both plain end and pinned.

We also sell the German made **Flying Dutchman** blades.

Plain end are \$5.00 a dozen. Pinned are \$6.50 a dozen.

3" pinned blades are \$5.50 a dozen. Coping saw blades are \$5.50 a dozen.

We also sell -

Mini chucks and mini twist drills.

Foot switches \$65.00.

Proportional scales \$6.00 (price reduced)—a handy tool.

We are also agents for all Hegner products including the Hegner Drum Sander.

All prices are plus postage.

Contact us for a blade catalogue

Helen Harris

PO Box 1384, Murray Bridge SA 5253

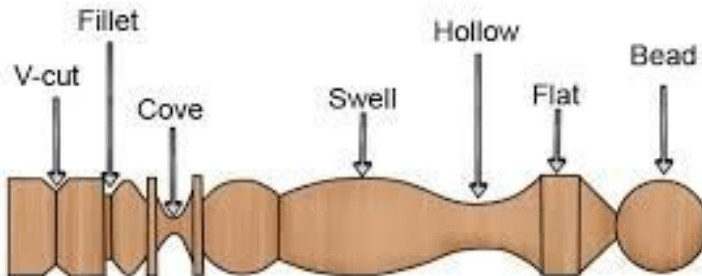
0428 826 224 08 8531 3440

ochjh@scrolling.com.au

FROM THE EDITOR

My apologies for the mix up with the show & tell from the November meeting. I will have to change the way that I get the information and the photo's, I will talk to Len & work something out.

Don Mc.





PLEASE SUPPORT THEM AS THEY SUPPORT US

**TO OUR MEMBERS AND ANY OF THEIR FAMILY WHO
ARE NOT WELL OR ARE IN HOSPITAL,
THE CLUB WISHES THEM A SPEEDY RECOVERY.**

W.T.G.V. WEBSITE - www.woodturnersgv.com
Our newsletter can be seen in colour on the website.

CWS

www.cwsonline.com.au

Your one stop shop for all your Woodcraft Supplies

**Phone, email, web mail order specialists**

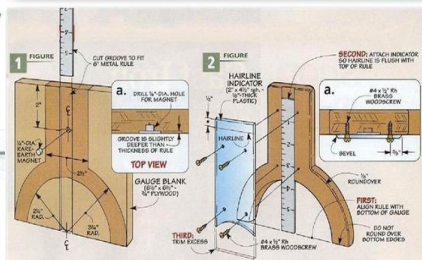
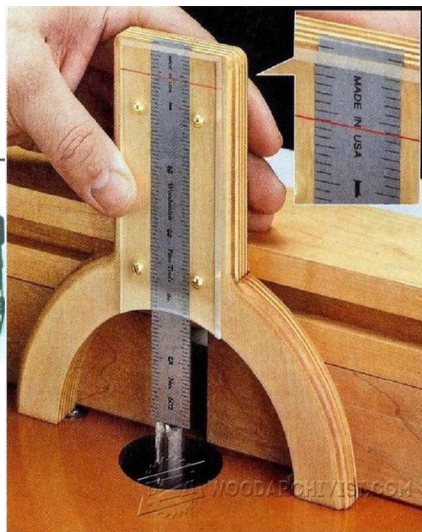
Carrol's Woodcraft Supplies

www.cwsonline.com.au

Unit 2 10/14 Capital Drive Grovedale 3216

Phone: 03 52480726 Fax: 03 52487216

Email: cws01@tpg.com.au



MY MEAN MOTHER

I had the meanest Mother in the world. While other kids had lollies for breakfast , I had to eat cereal, eggs and toast. While other kids had cans of drink and lollies for lunch, I had to have a sandwich. As you can guess, my dinner was not only different from other kids—I had to eat it at a table and not in front of the television.

My Mother also insisted on knowing where we were at all times. You'd think we were on a chain gang or something. She had to know who our friend were, where we were going, and she told us what time we had to be home.

I'm ashamed to admit it, but my mother actually had the nerve to break child labour laws. She made us wash dishes, make our beds, and even learn to cook. That women must have stayed awake at nights, just thinking up things for us kids to do.

By the time we were teenagers, our whole life became even more unbearable. Our old fashioned mother refused to let us date before we were fifteen, and then insisted that boys had to come to the door to collect girls from the family, instead of tooting the car horn for them to come running .

She really raised a bunch of squares. None of us kids was ever arrested for shop lifting or busted for dope.

And who do we thank this for? You're right - our mean mother. Every day we hear cries from both our people and our politicians about what our country really needs .

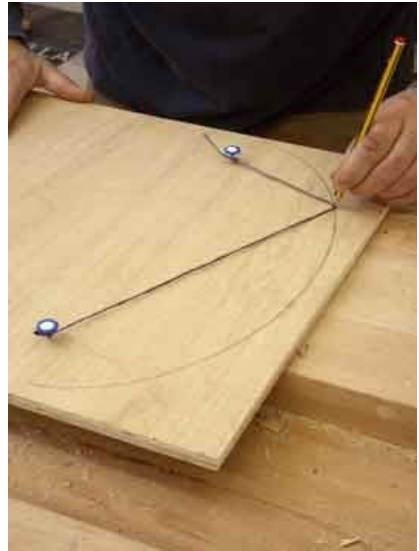
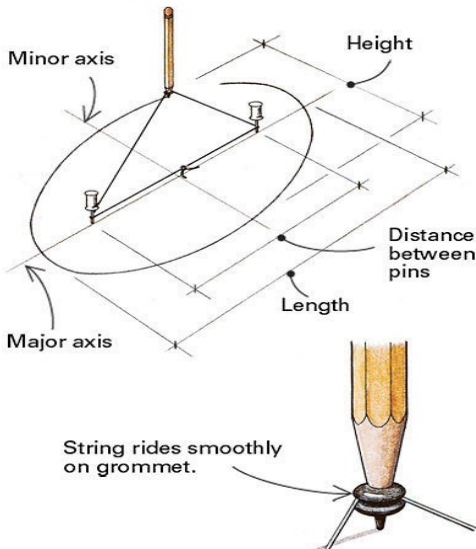
What our country needs—is more mothers like mine.

Author unknown .

COMING EVENTS

To be Advised - Visit to Benalla
Saw Milling at Alex Trotter's on Wednesdays, weather permitting &
confirmed on notice board
January - Raffle ticket sales
8th January - Committee meeting
15th January - General meeting
12th February - committee meeting
19th February - General Meeting
10th—11th February - Wood Show

Drawing an Oval With a pencil, a piece of cord and three pins



If undeliverable return to:
WOODTURNERS OF THE
GOULBURN VALLEY INC. 3352K
PO BOX 2071
SHEPPARTON VIC 3632

SURFACE
MAIL

POSTAGE
PAID
AUSTRALIA

**AVAILABLE TO MEMBERS FROM
WORSHOP**

AVXL VP GLUE 500 ml
JOINING BISCUITS PACK OF 50
DOWELS PACK OF 50 – 8,10 AND 11 mm
SANDPAPER – BELT, SHEET &
VELCRO
BANDSAW BLADES MADE TO SUIT

CLUB LIBRARY

BOOKS, MAGAZINES, VIDEOS & DVDS
AVAILABLE FOR ONE MONTH LOAN

WORKSHOP SUPERVISOR ROSTER

Tues	Thurs.	Sat.
9/1 John W	11/1 Peter	13/1 Rob.B
16/1 Carl	18/1 Lindsay	20/1 Willis
23/1 David	25/1 Perrie	27/1 Rob B
30/1 Perrie	01/2 Lindsay	3/2 Willis
06/2 Rob B	08/2 David	10/2 John W
13/2 Perrie	15/2 Carl	17/2 Peter
20/1 David	22/2 Lindsay	24/2 John W
27/2 Willis		

Wednesday p.m. Vern and Don
Thursday p.m. Len plus supervisors